

DISTRICT OF KITIMAT EMERGENCY MANAGEMENT PLAN

District of Kitimat Emergency Response and Recovery

The District of Kitimat is susceptible to numerous hazards. These hazards, risks and vulnerabilities can be human caused, technological such as those involving hazardous materials, infrastructure disruptions that could involve utility and power failures, and natural hazards such as severe weather.

The intention of the District of Kitimat Emergency Management Plan is to provide the framework within which extraordinary arrangements and measures can be taken to protect the health, safety, and welfare of the residents and visitors of the District of Kitimat when faced with an emergency.

The plan combines the efforts of District organizations for a comprehensive and effective approach for responding to and reducing the impacts of a major emergency. It is intended to increase the emergency response capability of the District of Kitimat by establishing a plan of action to efficiently and effectively deploy emergency services.

Emergency Operations Centre (EOC)

In the event that an incident cannot be adequately managed from the site, or there are multiple sites, support will be provided through activation of the Emergency Operations Centre. Members of Council and the Emergency Executive Committee, as identified in Part 12 of the Municipal Code, have the authority to activate the EOC. By Declaration of a State of Provincial Emergency, the Director of the Provincial Emergency Program also has the authority to activate a municipal EOC.

The EOC is a central location where local government officials provide inter-agency coordination, communications, policy guidance, resource acquisition and executive decision-making for coordinating and supporting emergency response and recovery efforts.

The District's primary EOC is located at the Public Safety Building with an alternate facility at the Riverlodge Recreation Centre or City Hall. A third option is the Kitimat Fire and Ambulance Mobile Command Vehicle if it is not being used at the incident site.

The following individuals may authorize activation of the EOC:

- Chief Administrative Officer or Acting CAO
- Emergency Program Coordinator or Deputy
- Mayor or Acting Mayor
- Fire Chief
- RCMP Staff Sargent

may authorize activation of the EOC:

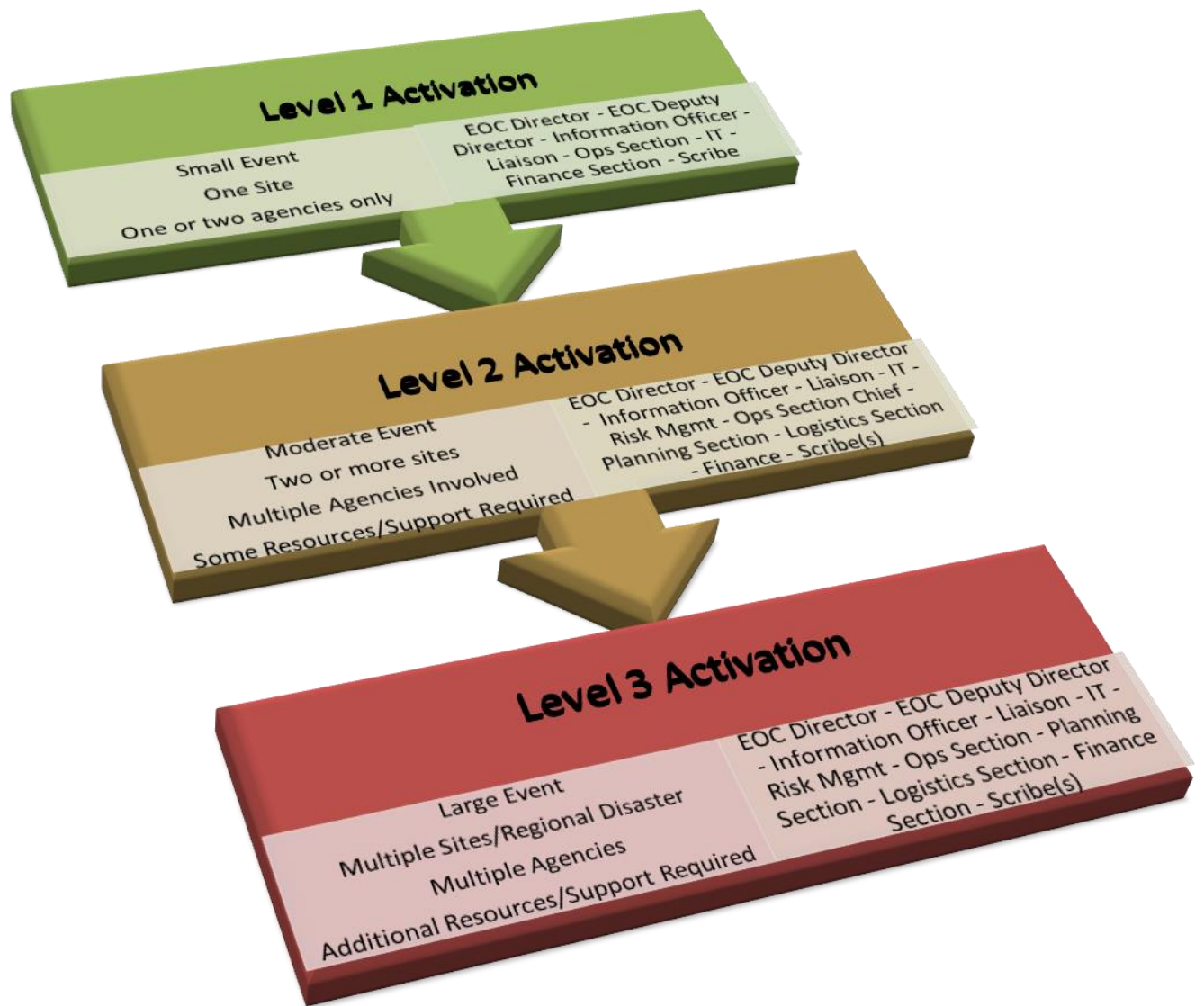
- Chief Administrative Officer or Acting CAO
- Emergency Program Coordinator or Deputy
- Mayor or Acting Mayor
- Fire Chief
- RCMP Staff Sargent

Activation

The EOC may be activated if one or more of the following criteria apply:

- Significant number of people at risk.
- Response coordination required because of large or widespread event.
- Multiple emergency sites.
- Several responding agencies.
- Resource coordination required because of limited local resources and/or significant need for outside resources.
- Uncertain conditions or extent of damage.
- Possibility of escalation of the event.
- Potential threat to people, property and/or environment.

The level of EOC activation is determined by the magnitude and scope of the event. Only those EOC functions and positions that are required to meet current response objectives are activated. If staff are not assigned to a function or role, the next available staff position in the EOC organization will assume responsibility and the tasks assigned. If an individual is unsure of which level to activate, the EOC is activated to the higher level since it is easier to scale back than to ramp up.



A risk specific guides help navigate the identified key threats for which the District is susceptible to. These risks have a number of dependencies on our critical infrastructure as these systems have complex relationships, dependencies, and interdependencies that cross infrastructure boundaries. Interruptions to power, communications, water/sanitary, or transportation, are hazards themselves, and carry major impacts. Each of these four key infrastructure sectors - power, communications, water, and transportation - impact one another, other infrastructure, and resident's ability to function, respond and recover and would impact a large cross section of the community.