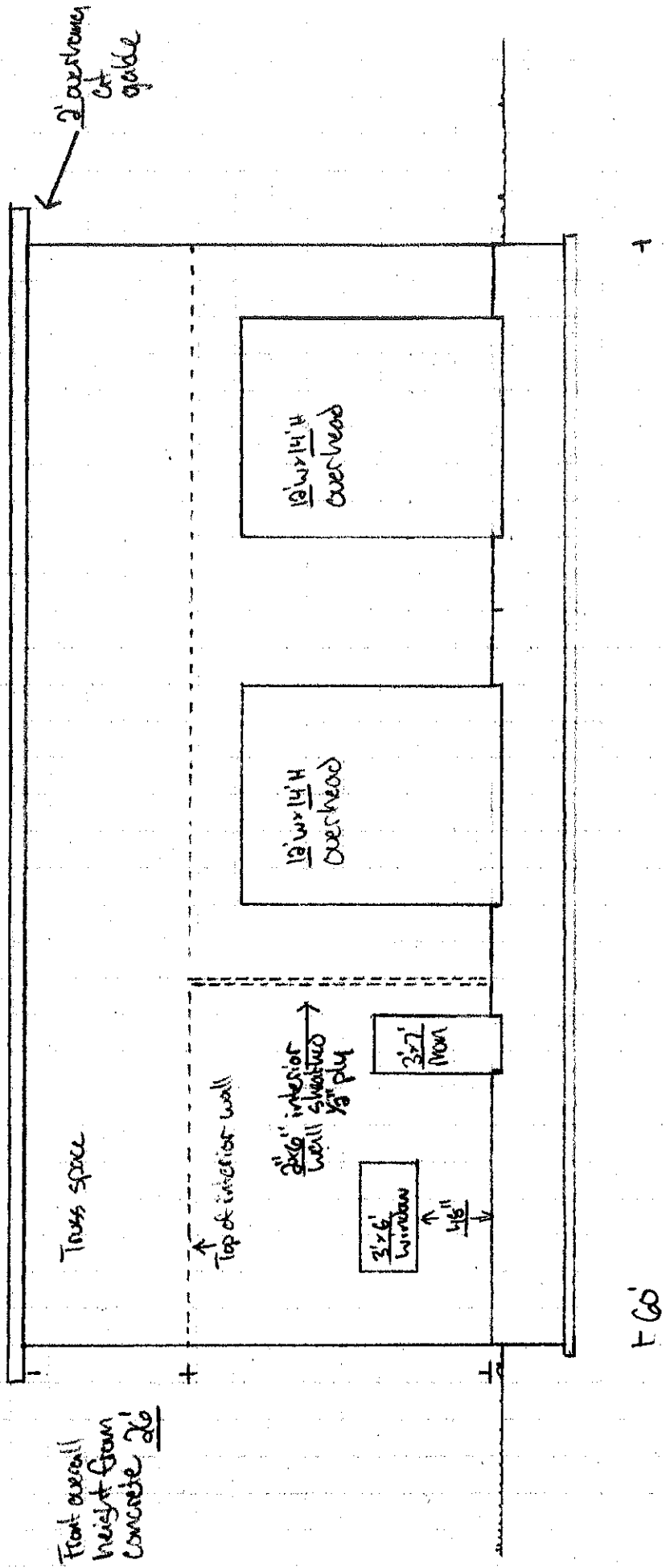
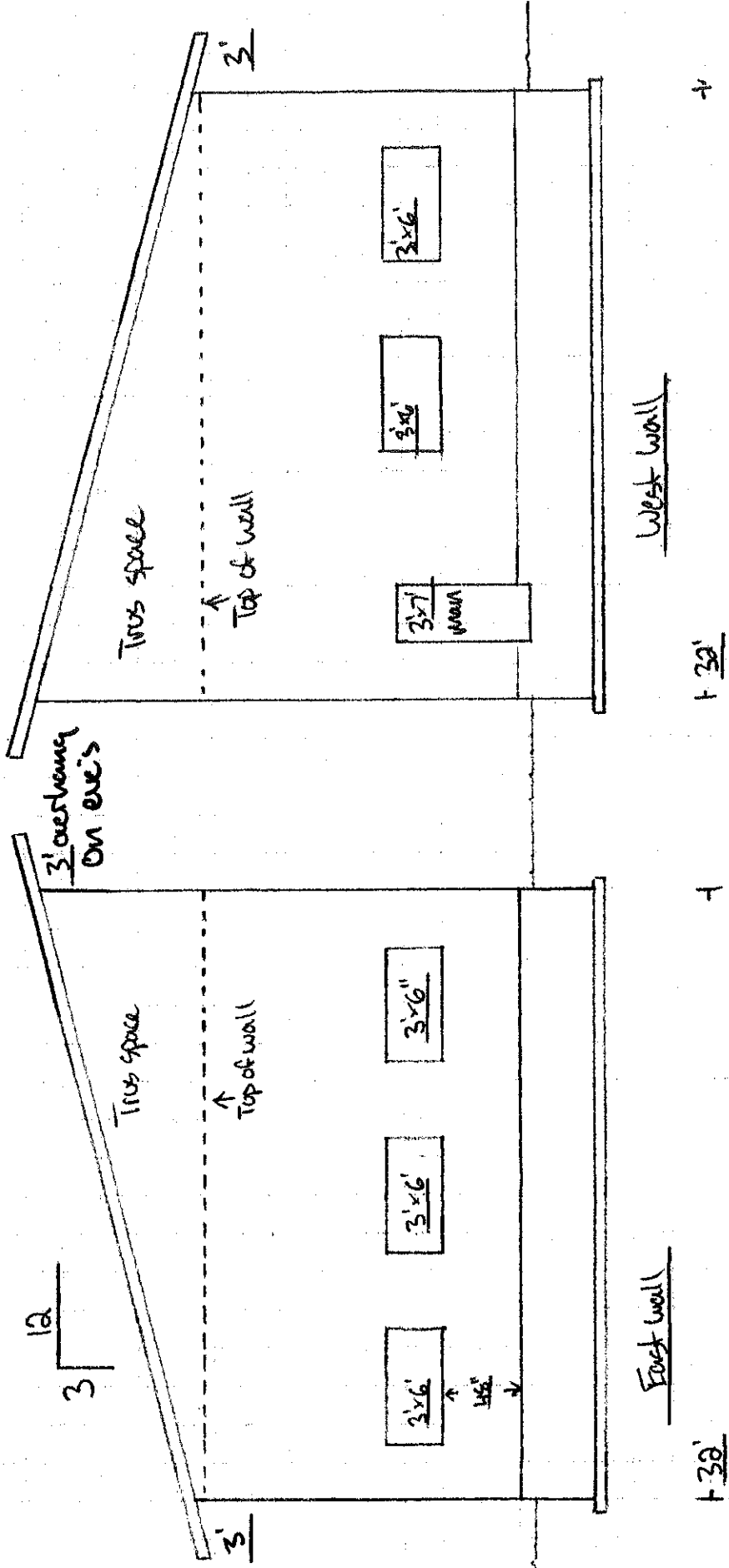


Front of building (North side)

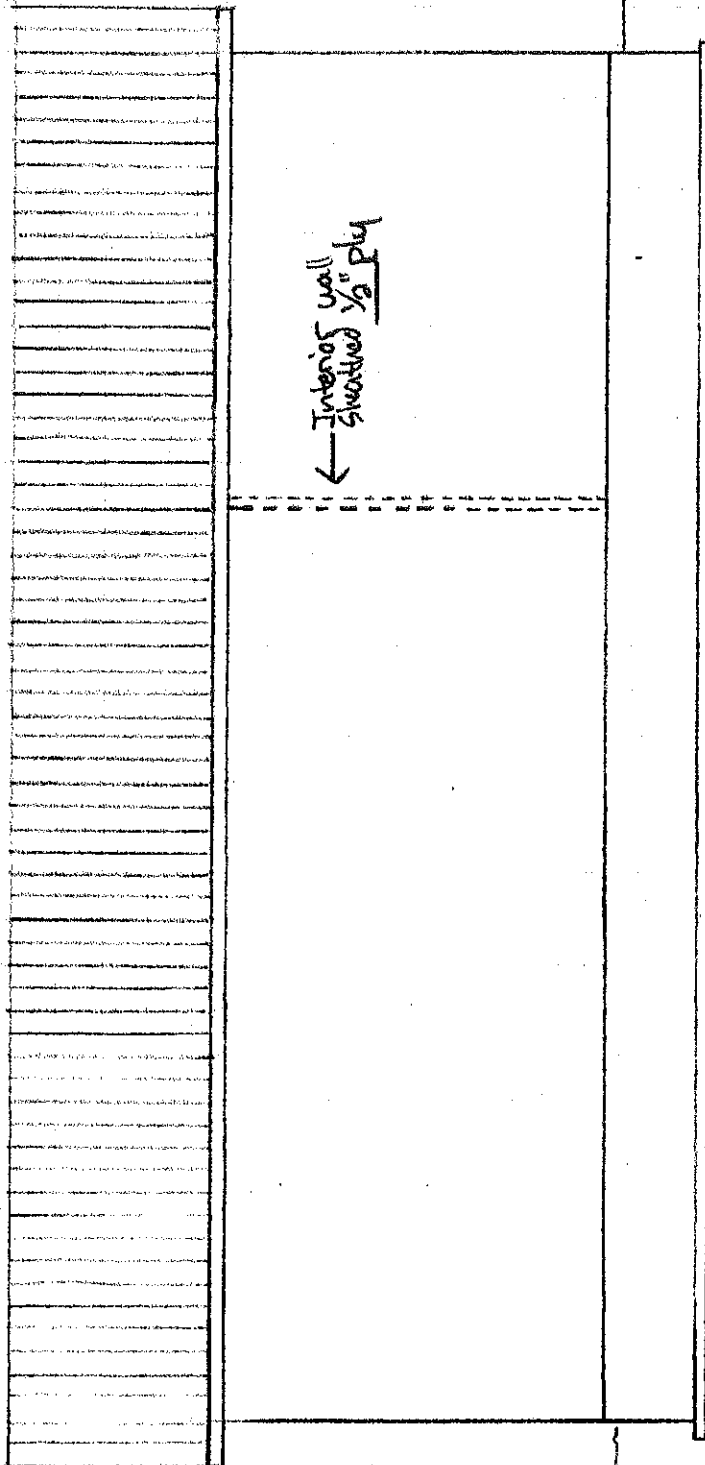
Building to be clad in metal siding
Building roof to be done using hidden fastener metal roofing

Windows to be placed 48" above foundation

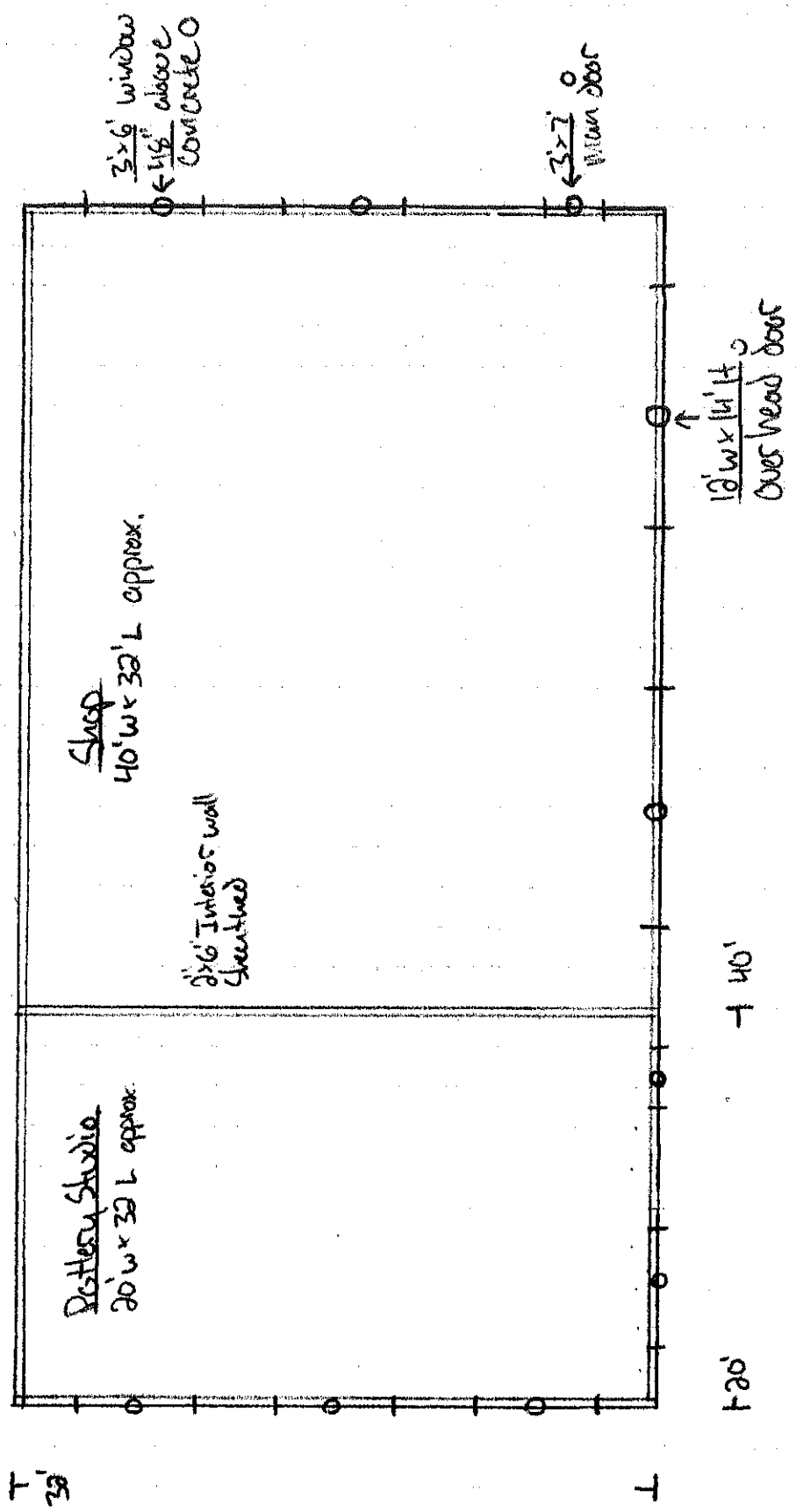




Back of building (South side)



Top View / Floor Plan



Pottery Studio
20' w x 32' L approx.

Shop
40' w x 32' L approx.

2x6 Interior wall
Sheathed

3x6 window
1/2" above
concrete

3x7
window door

18' w x 14' H
Over head door

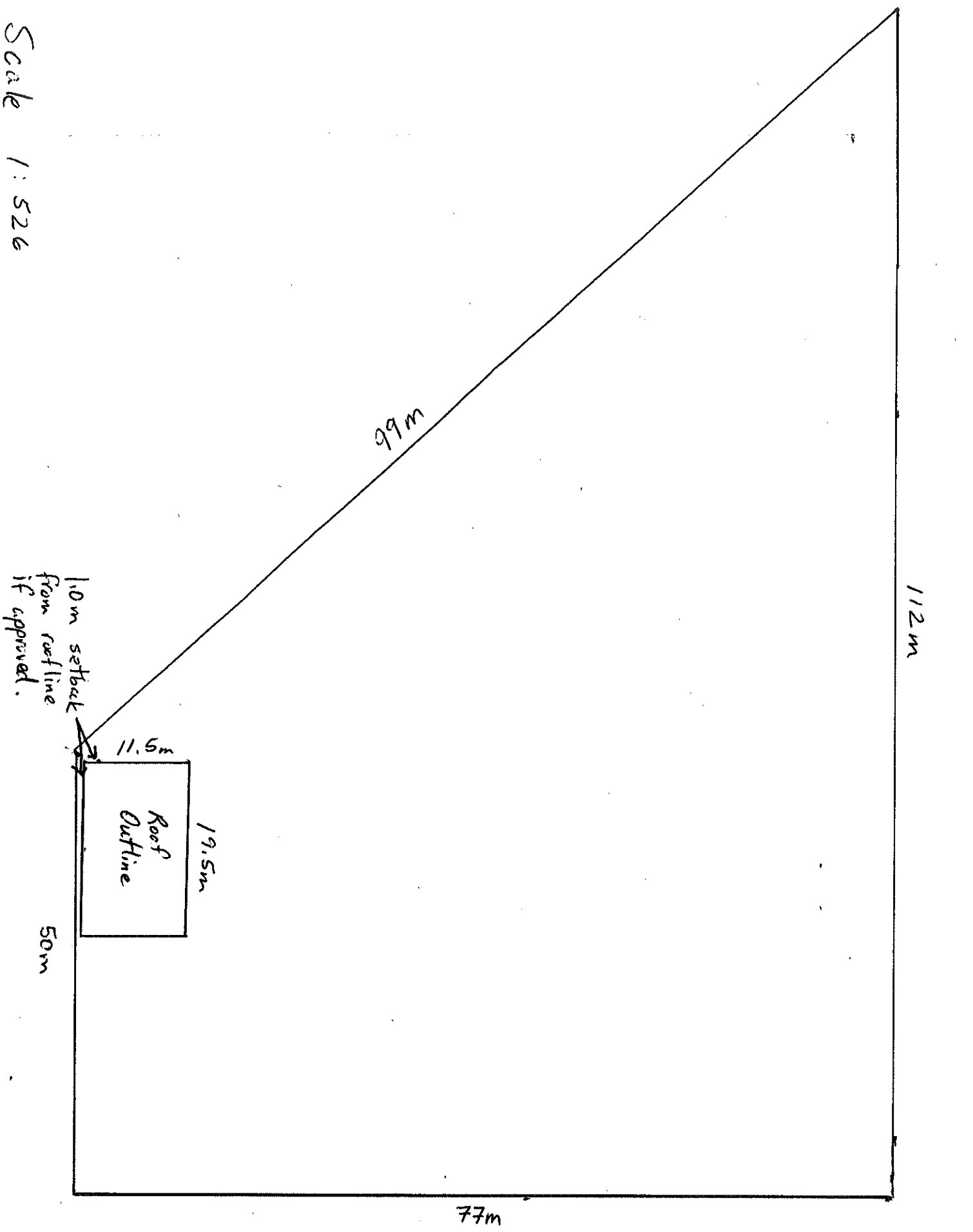
T
39'

T

70'

40'

Scale 1:526



112m

99m

1.0m setback
from roofline
if approved.

11.5m

Roof
Outline

19.5m

50m

77m

STURGEON ST

