

Examples of Detached Accessory Dwelling Units

Micro or Tiny Homes

Tiny living spaces are becoming popular for those wishing to reduce energy costs and their environmental footprint.

Offering a dwelling unit with necessary amenities in a small living space can be attractive to family members with limited income or as a low-cost rental unit.



Approximate Dimensions:

Length - 3.5m
Width - 3.5m
Height - 3.5m

Narrow Home

Narrow cottages offer slightly more space than a tiny home. Most are not highly visible from to neighbouring properties.

Prefab or prebuilt units can keep costs down for property owners wishing to construct an ADU.



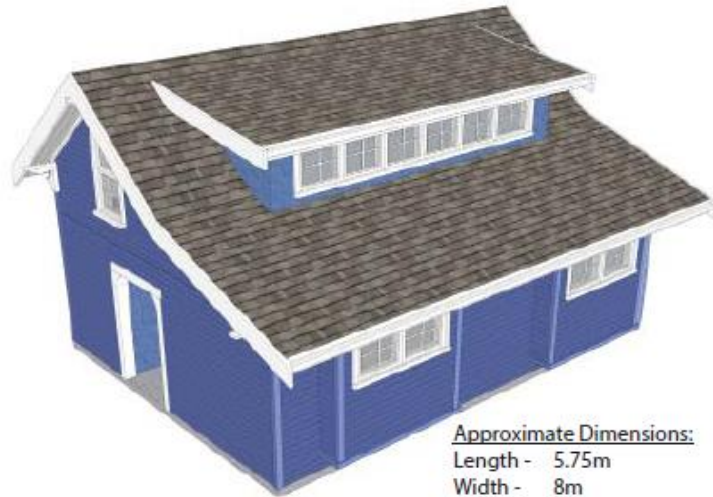
Approximate Dimensions:

Length - 7.5m
Width - 4m
Height - 3.75m

Large Cottage

Cottage homes offer compact living with approximately the same living space as a one-bedroom apartment.

Larger cottages are custom built on site, and cost more than a prefab structure.



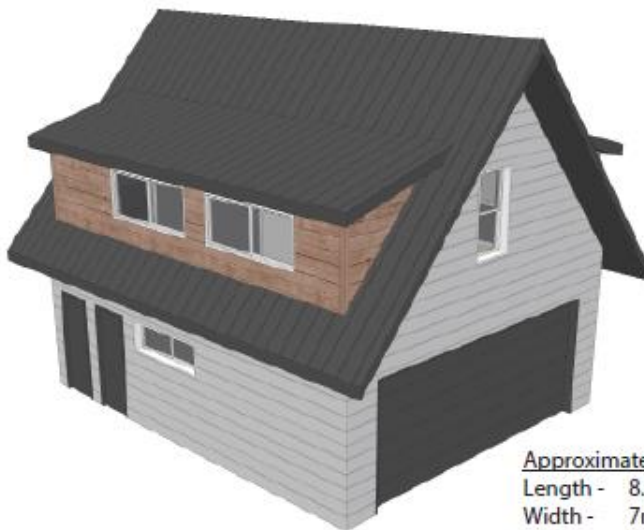
Approximate Dimensions:

Length - 5.75m
Width - 8m
Height - 4.5m

Carriage Home

A carriage home is attached to a garage or other accessory structure. Carriage homes are typically larger than other types of ADUs. Two storey layout accommodates a ground-level entrance, with living space over a garage.

Cable Car offers large rural residential lots with several screening options; including: trees, hedges, and other landscaping features.



Approximate Dimensions:

Length - 8.25m
Width - 7m
Height - 7.25m

Sample Site Plan

