

R3-C Mixed Use Social Housing

Identification

- Limit 1 Sign
- Sites up to 1860m²:
 - Max Area 0.6m²
 - *Max Height 2m
- Sites over 1860m²:
 - Max Area 3m²
 - *Max Height 2.5
- *When Freestanding



C11 Highway Commercial

Freestanding

- Limit 1
 - Single or double-faced
 - Max Area 6m²
 - Max Height 9m
- For Hotel or Motel
- Max Area 12m²
 - Max Height 9m



Projecting

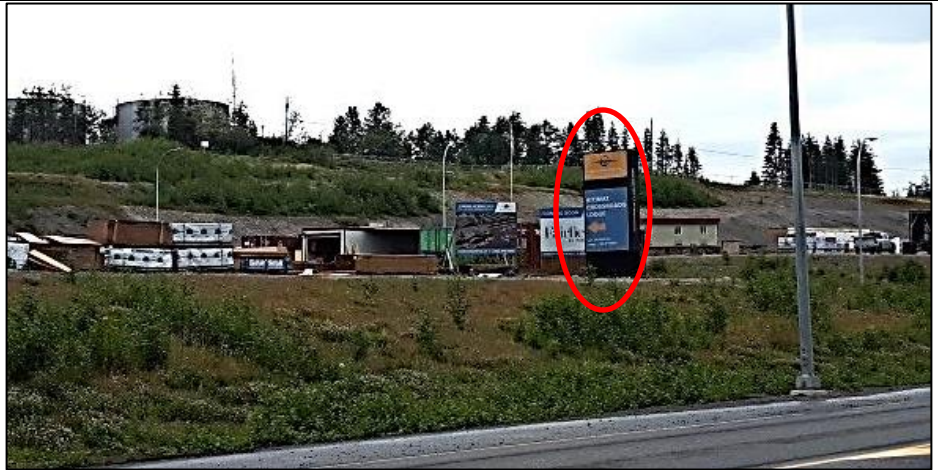
- Max Area 2.5m² per face
- Min Clearance 2.5m above finished grade



C12 Commercial Transition and Interim Residential Dormitory

Freestanding

- Limit 1
- Single or double-faced
- Max Area 6m²
- Max Height 9m



C13 Haisla Town Centre

Freestanding

- Limit 1
- Single or Double-faced
- Max Area 6m²
- Max Height 9m

