



Do you have any stories, experiences, or comments to contribute to a local area plan for west side of Douglas Channel? All comments are welcome.

Name:

Address:

Email:

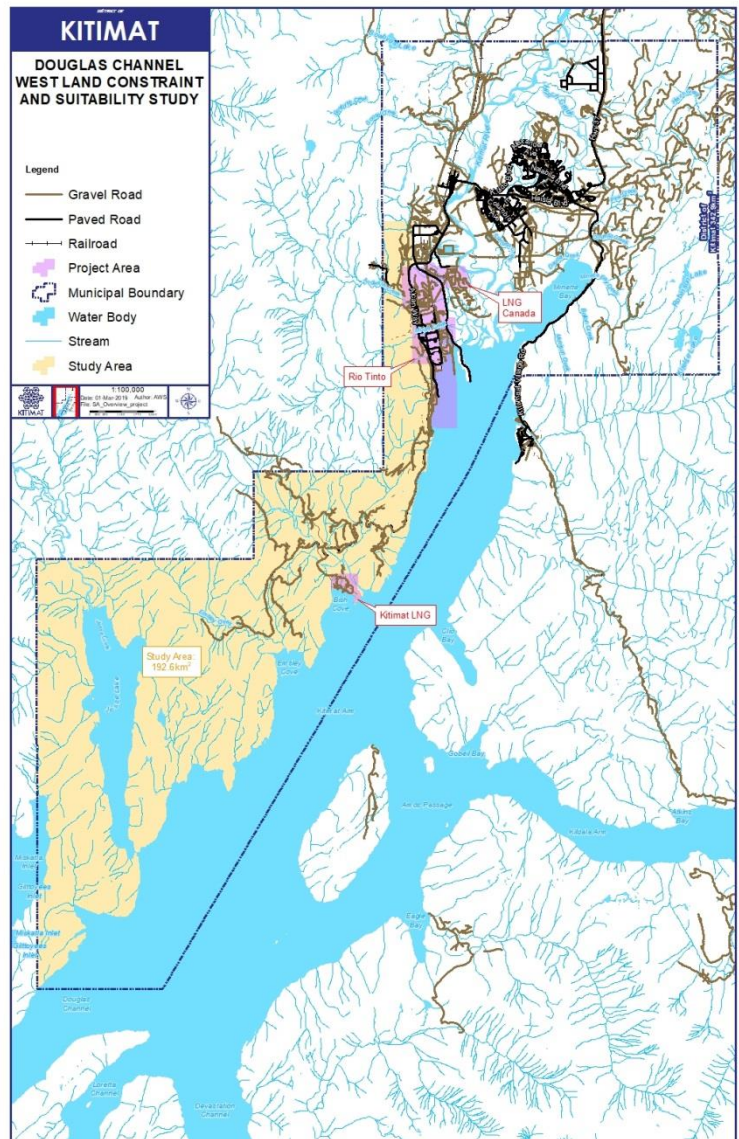
Do you want to be included on our email list for updates on this process? Yes / No (Please Circle)

What are your Top Priorities?

What are your Top Concerns?

Any personal information attributed to these comments is being collected and disclosed for the above stated purpose in accordance with S.26(d) and S.32(b) of the Freedom of Information and Protection of Privacy Act. Questions about the collection of personal information can be directed to the Kitimat Corporate Officer at 250-632-8900 or at 270 City Centre, Kitimat BC.

What Special Places do you visit in the study area and how do you get there?



General Comments

Thank you for your time and feedback! Completed comment forms can be delivered to the front desk at Municipal Hall; faxed to 250-632-4995; or scanned and e-mailed to dok@kitimat.ca. Public comments become part of the public record and included as background material for this local area plan.

Information regarding the South West Kitimat Area Plan is available on the project page of the *District of Kitimat* website: <https://www.kitimat.ca/swkap>. Public Handbook is available at *District of Kitimat* Municipal Hall, 270 City Centre, from 8:30am to 5:00pm, Monday to Friday (excluding holidays).

Any personal information attributed to these comments is being collected and disclosed for the above stated purpose in accordance with S.26(d) and S.32(b) of the Freedom of Information and Protection of Privacy Act. Questions about the collection of personal information can be directed to the Kitimat Corporate Officer at 250-632-8900 or at 270 City Centre, Kitimat BC.